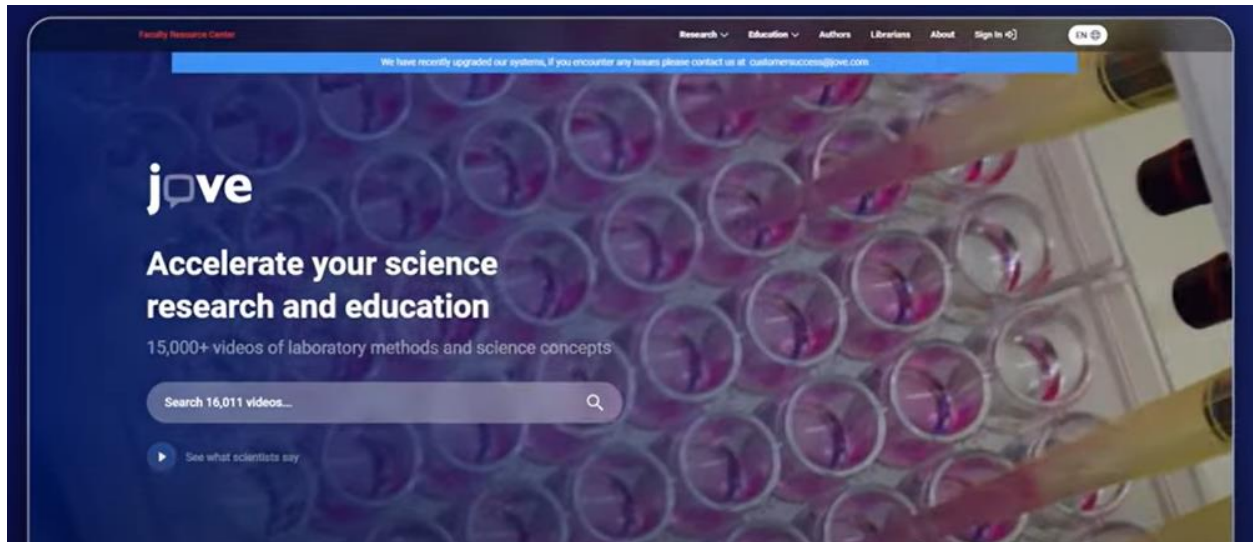
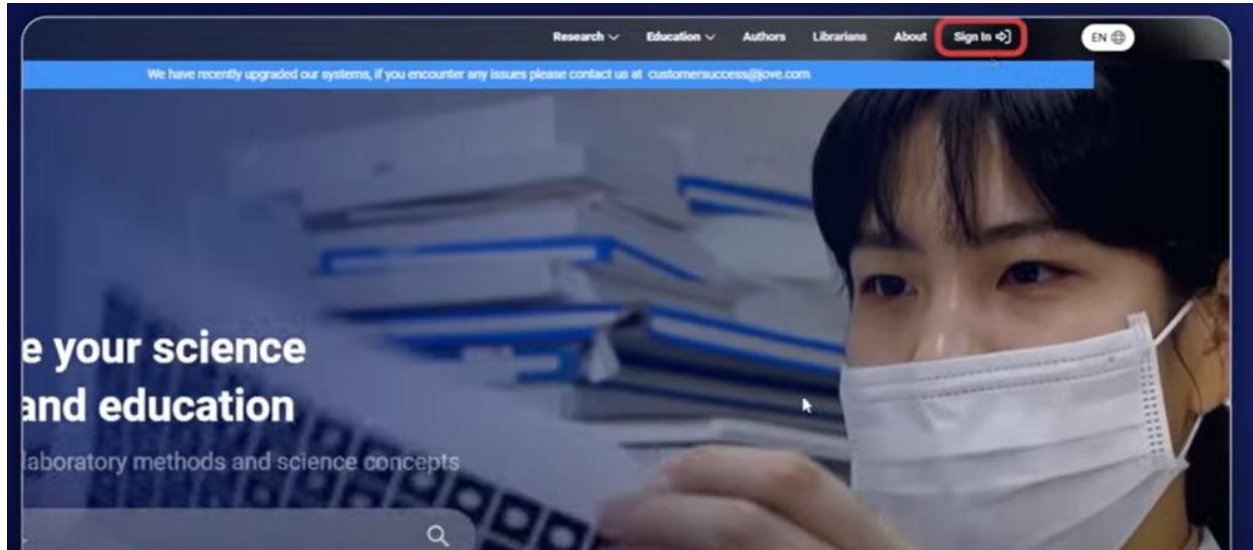


How to Create a JoVE Account:

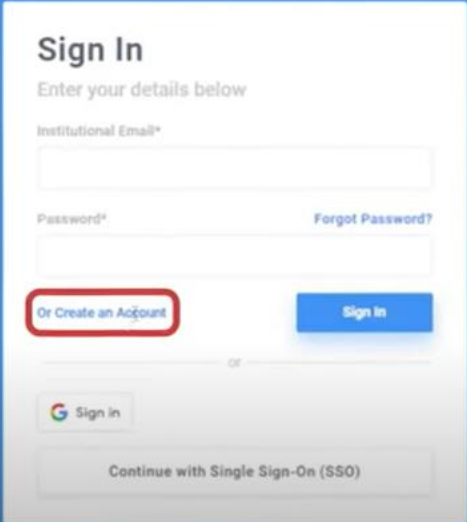
This is the JoVE.com homepage. (you may use any browser)



To start creating an account, click “Sign In”.



Select “Create an Account”



Sign In


Enter your details below

Institutional Email*

Password* [Forgot Password?](#)

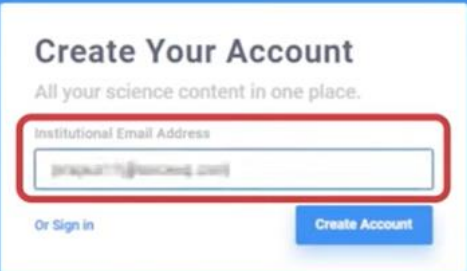
[Or Create an Account](#) [Sign In](#)

or

 [Sign in](#)

[Continue with Single Sign-On \(SSO\)](#)

Enter your institutional email address:



Create Your Account

All your science content in one place.

Institutional Email Address

[Or Sign in](#) [Create Account](#)

We use/store this info to ensure you have proper access and that your account is secure. We may use this info to send you notifications about your account, your institutional access, and/or other related products. To learn more about our GDPR policies click [here](#).

If you want more info regarding data storage, please contact gdpr@jove.com

here'. At the bottom, it says 'If you want more info regarding data storage, please contact [gdpr@jove.com](\"mailto:gdpr@jove.com\")'." data-bbox="113 86 875 350"/>

Create Your Account

All your science content in one place.

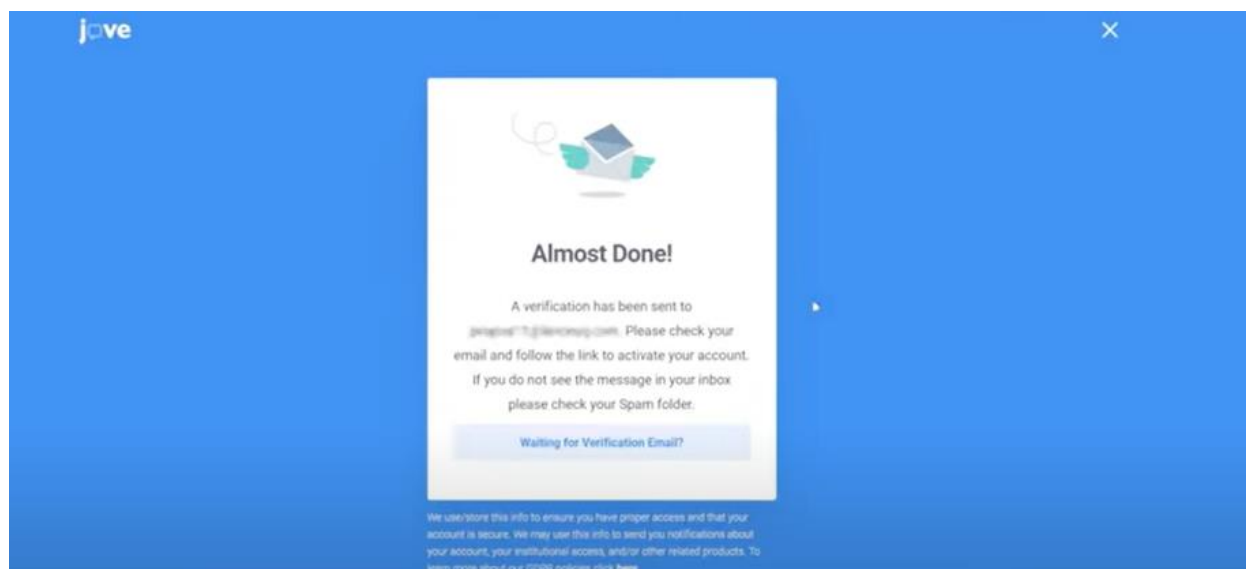
Institutional Email Address

[Or Sign in](#) [Create Account](#)

We use/store this info to ensure you have proper access and that your account is secure. We may use this info to send you notifications about your account, your institutional access, and/or other related products. To learn more about our GDPR policies click [here](#)

If you want more info regarding data storage, please contact gdpr@jove.com

Click Create Account tab to get a verification confirmation email.



A verification email will be sent to you to complete your details and to set up your own password.

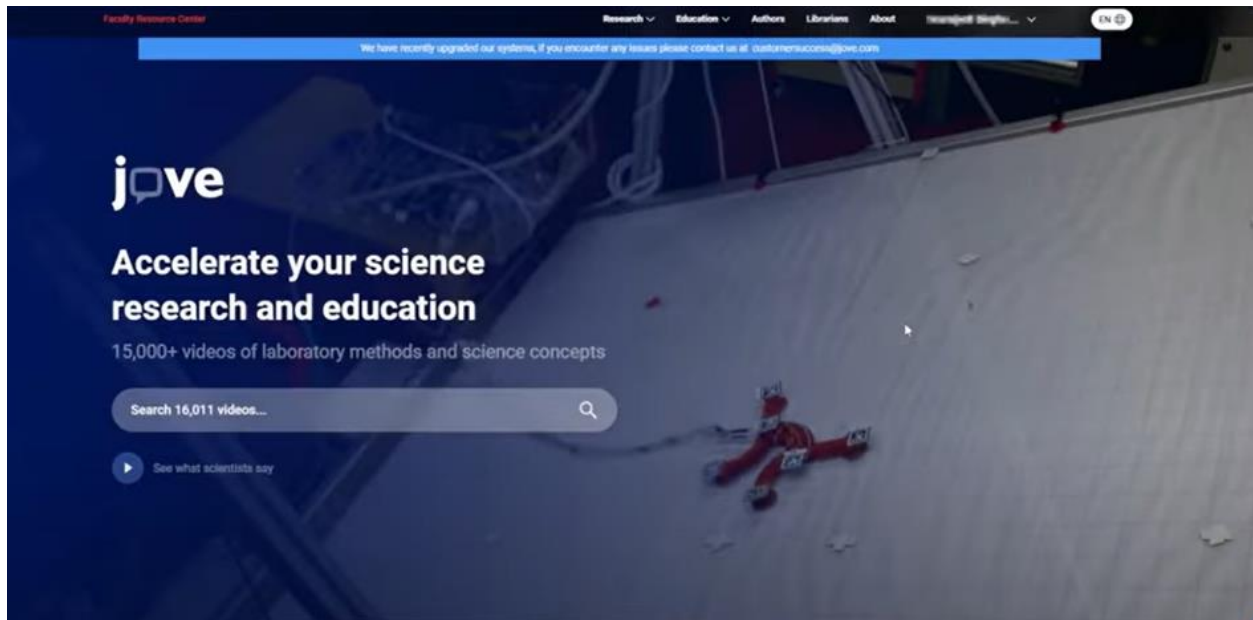


Fill out the form with the needed information.

A form for creating a JoVE account. The form is white and centered on a blue background. At the top left of the form is the JoVE logo. At the top right is a close button (X). The heading of the form is "Just a bit more...". Below the heading is the text "Thanks for your patience!". The form contains several input fields: "First Name", "Last Name", "Password", "Confirm Password", "Institution", "Select a role" (a dropdown menu with "Select a role" as the selected option), and "Job Title". At the bottom right of the form is a blue button labeled "Create Account".

Important Note: Ensure that you select the correct Role and Job Title to get appropriate access.

Once done, click create account and you will be redirected to JoVE landing page. You will now be able to explore JoVE website and access any collection.



For full video guide, access this link below:

https://www.youtube.com/watch?v=5XrQib7s_ZM